



## Professional conferences, elegant celebrations.

These two things are anything but mutually exclusive at the luxurious Hotel Königshof. Why not serve award-winning cuisine at a conference or use professional equipment at a banquet? Enjoy all this and more in an exclusive ambience!

**Hotel Königshof** | Karlsplatz 25 | 80335 Munich, Germany | Tel. +49 (0)89 55 136-0 | Fax +49 (0)89 55 136-113  
koenigshof@geisel-privathotels.de | www.geisel-privathotels.de

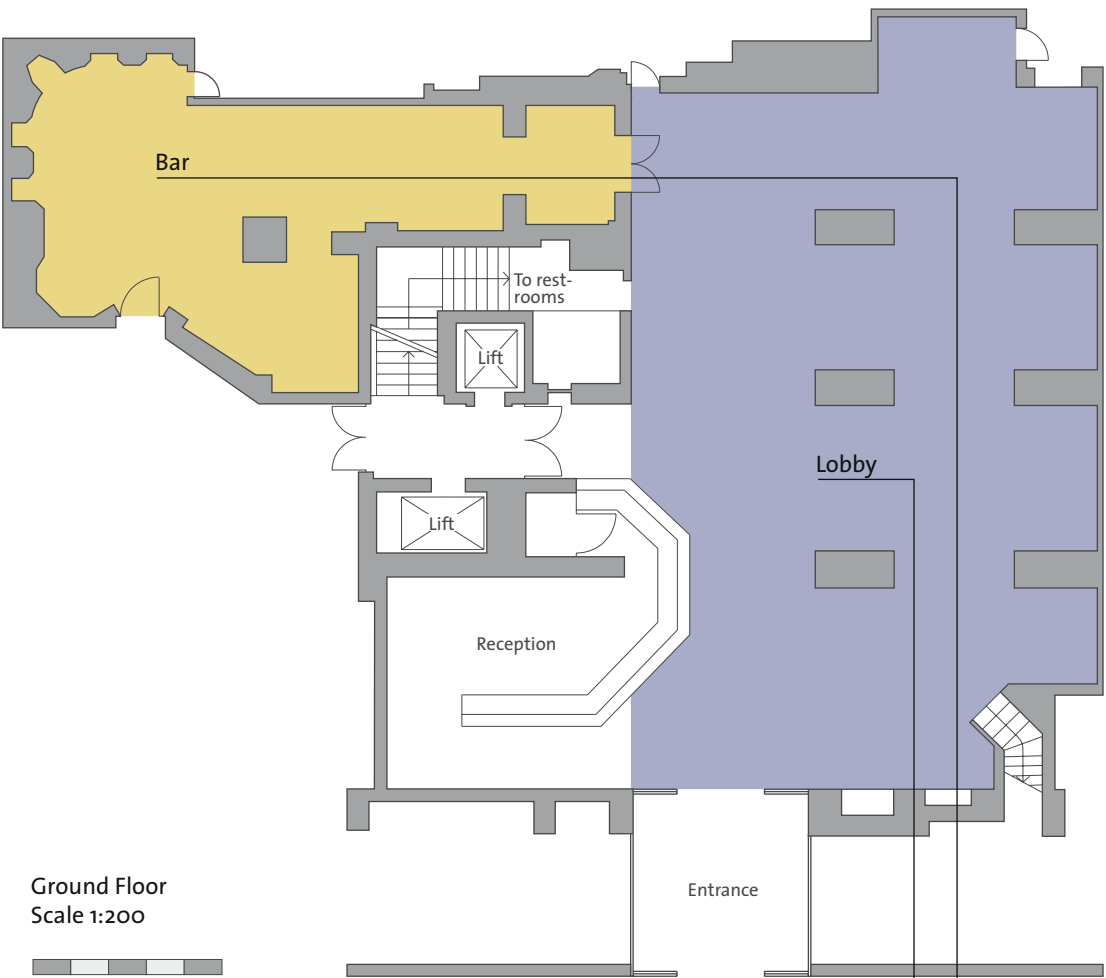
**Banquet:** 6 rooms accommodating from 4-180 persons, natural lighting, sound-proof windows, air conditioning | Conference and banquet equipment: Video beamer, overhead and slide projector, screen, audio system, video and DVD players, lectern with microphone system, mobile stage elements, mobile dance floor (prices on request) | **Hotel:** 5-star luxury hotel | 71 single and double rooms | 16 suites | 180 underground parking spaces | **Location:** City center, Karlsplatz/Stachus | 500m to the main station | 350m to Hotel Excelsior | Next door to anna hotel | Underground station and streetcar stop in front of the hotel | 10-minute walk through pedestrian zone to Marienplatz | Ride time: 40 minutes to the airport, 20 minutes to the exhibition grounds | **Room amenities:** Sound-proof windows | Individually regulated climate control | Satellite television with pay TV | Radio | Wireless LAN high-speed Internet access | Writing desk | Telephones (also in the bathrooms) | Mini bar | Safe | Bathroom with luxury shower or bathtub, professional hair dryer, cosmetic mirror, heated towel racks, exclusive personal care products from ETRO | **Wellness:** Sauna, steam bath, whirlpool and gym | **Restaurant & Bar:** Gourmet Restaurant Königshof, 1 Michelin Star, 18 points in Gault Millau, champagne breakfast in Gourmet Restaurant Königshof 6:45 to 10:30 am, lunch 12:00 to 2:30 pm (Tues.–Sat.), dinner 6:30 to 10:00 pm (Tues.–Sat.) | Bar Königshof: open end | **Service:** Front desk open 24 hours | Valet service | Doorman | Porter | Concierge | 24-hour room service | Shoeshine service (by hand) | Turn-down service | Laundry service (washing & ironing) within 8 hours (Mon.–Sat.) | **Special features:** Thomas Cook travel agency, Sixt car rental, allaboutwine (wine shop) on the premises | Rooms with extra-long beds – up to 2.10m | All rooms with halogen reading lights above the beds | **Included:** Wireless LAN high-speed Internet access, pick-up service from the main station

**Reservations:** Tel. +49 (0)89 55 136-193 | Fax +49 (0)89 55 136-192 | res.koenigshof@geisel-privathotels.de | www.geisel-privathotels.de  
**Reservations system/GDS Codes:** Amadeus LW MUC733 | Galileo LW 59759 | Sabre LW 28266 | Worldspan LW 0733  
**Credit cards:** American Express | Diners Club | JCB | MasterCard | VISA | EC Card

Member of The Leading Small Hotels of the World | L'Art de Vivre

*The Leading Small Hotels  
of the World*

L'Art de Vivre  
Dutch & Restaurants



|     |       |                               |                  |     |
|-----|-------|-------------------------------|------------------|-----|
|     |       |                               |                  |     |
|     | Lobby |                               |                  |     |
| 120 | 211   | 1.60 L<br>12.00 W<br>3.60 H   | 1.56 W<br>2.08 H | REC |
|     | Bar   |                               |                  |     |
| 25  | 52    | 13.00 L<br>4-6.00 W<br>3.00 H | 1.38 W<br>2.11 H | REC |

Stand-up reception Area in square meters Max. room length (L), width (W), height (H) in meters Max. door width (W), height (H) in meters Room suitability (REC = Reception). All rooms are air-conditioned.



HOTEL KÖNIGSHOF

MÜNCHEN



HOTEL KÖNIGSHOF

MÜNCHEN





When it comes to conferences and banquets, you can expect more from a 5-star luxury hotel like the Königshof. This is where small conferences are handled with the same professionalism and unobtrusive attentiveness as gala events attended by 180 or more people Geisel Privathotels – where each individual guest is treated like a VIP.

1 The lobby, where classic interior architecture and modern furniture designs create a distinctly personal ambience, is ideal for exclusive receptions. 2 The distinctive elegance of the „Königshofsalons“ offers an exquisite atmosphere for prestigious banquets and meetings. 3-5 Whether you reserve the „Luisensalon“ for a business presentation or a private party with a small circle of friends, the impressive view of the „Stachus“ and „Frauenkirche“ is free of charge.

Cover page: Amaliensalon

### "Königshofsalons"

With a total area of 115 square meters, the "Königshofsalons" offer the largest continuous space for any occasion with practically unlimited options for creating your event with a personal touch.

Virtually any seating arrangement is possible: From the classic U-shape, to block or parliament-style, and row seating for lectures or seminars. With a choice of round or oval shaped tables, the "Königshofsalons" can be converted into a spacious ballroom or your own personal gala restaurant. Along with a variety of seating arrangements, you have practically unlimited design freedom with the option of dividing the total floor space into three different sizes for the "Amalien", "Sophien" and "Therisiensalons". This is an ideal

solution, for example, when you want to conduct separate workshops following a presentation or have two or three events running simultaneously.

When you need more space, you can use the lobby on the ground floor and the foyer in front of the "Königshofsalons", the "Carolinen" and "Luisensalon" or the "Lounge".

Of course you can also integrate the "Gourmet Restaurant Königshof", which has been awarded 18 out of 20 Gault Millau points and one of the coveted Michelin Stars, into your event planning.

The following outlines a few details on the different banquet rooms: "Carolinsalon"

| Amaliensalon   |     |     |     |       |     |     |                             |                  |     |                 |  |  |
|--|-----|-----|-----|-------|-----|-----|-----------------------------|------------------|-----|-----------------|--|--|
| 25   | 24  | 25  | 55  | 24-40 | 60  | 60  | 9.00 L<br>6.75 W<br>3.75 H  | 1.60 W<br>2.50 H |     | CON/<br>D/L     |  |  |
| Sophiensalon   |     |     |     |       |     |     |                             |                  |     |                 |  |  |
| ---  | 12  | --- | 20  | 10    | 20  | 30  | 5.00 L<br>6.00 W<br>3.75 H  | 1.60 W<br>2.50 H |     | CON             |  |  |
| Therisiensalon                                       |     |     |     |       |     |     |                             |                  |     |                 |  |  |
| ---  | 10  | --- | 15  | 10    | 20  | 25  | 4.50 L<br>5.50 W<br>3.75 H  | 1.60 W<br>2.50 H |     | CON             |  |  |
| Amalien + Sophiensalon                               |     |     |     |       |     |     |                             |                  |     |                 |  |  |
| 45   | 40  | 40  | 90  | 60    | 120 | 90  | 14.00 L<br>6.75 W<br>3.75 H | 1.60 W<br>2.50 H |     | CON/<br>D/L     |  |  |
| Sophien + Therisiensalon                             |     |     |     |       |     |     |                             |                  |     |                 |  |  |
| 25   | 24  | 25  | 55  | 24-40 | 60  | 55  | 9.50 L<br>6.00 W<br>3.75 H  | 1.60 W<br>2.50 H |     | CON/<br>D/L     |  |  |
| Königshofsalons (Amalien + Sophien + Therisiensalon) |     |     |     |       |     |     |                             |                  |     |                 |  |  |
| 60   | 50  | 60  | 110 | 100   | 150 | 115 | 18.50 L<br>6.75 W<br>3.75 H | 1.60 W<br>2.50 H |     | CON/D/<br>L/REC |  |  |
| Carolinsalon   |     |     |     |       |     |     |                             |                  |     |                 |  |  |
| ---  | 24  | --- | 40  | 24    | 40  | 43  | 9.85 L<br>4.35 W<br>2.80 H  | 2.55 W<br>2.20 H | --- | CON/<br>D/L     |  |  |
| Gourmet Restaurant Königshof                         |     |     |     |       |     |     |                             |                  |     |                 |  |  |
| ---  | --- | --- | --- | 160   | 180 | 189 | 21.00 L<br>9.00 W<br>2.64 H | 1.80 W<br>2.38 H |     | D/L             |  |  |
| Lounge   |     |     |     |       |     |     |                             |                  |     |                 |  |  |
| ---  | 22  | --- | --- | 36    | 45  | 43  | 9.60 L<br>4.50 W<br>2.75 H  | 1.40 W<br>2.40 H |     | D/L/<br>REC     |  |  |
| Luisensalon  |     |     |     |       |     |     |                             |                  |     |                 |  |  |
| ---  | 22  | --- | --- | 36    | 45  | 43  | 9.60 L<br>4.50 W<br>2.75 H  | 1.50 W<br>2.40 H |     | D/L/<br>REC     |  |  |

With its light wood paneling, opulent stucco ceiling, antique chandeliers and close proximity to the restaurant, this salon is ideal for exclusive banquets or presentations for up to 40 guests.

### "Lounge" and "Luisensalon"

Whether you're planning a stand-up reception for up to 45 people or a banquet for up to 36 special guests, these two

salons offer plenty of space for your exclusive event. The view of the busy "Stachus" square and the "Frauenkirche" is truly impressive. Incidentally, both rooms are air-conditioned and soundproofed.

### "Gourmet Restaurant Königshof"

If you're expecting a few more guests, we will gladly reserve our award-winning restaurant exclusively for you. No matter

what type of event you're planning, we are at your service to ensure that it will be a unique and truly unforgettable experience.



U-shape (perimeter seating) Block Parliament Row seating Banquet (round/oval tables) Stand-up reception Area in square meters  
 Max. room length (L), width (W), height (H) in meters Max. door width (W), height (H) in meters Daylight Room suitability (CON = Conference, D = Dinner, L = Lunch, REC = Reception). All rooms are air-conditioned.